



WICKING ELEMENT REPLACEMENT INSTRUCTIONS

LOW PROFILE CASES



**NOTE: KILLION INDUSTRIES RECOMMENDS
DISSIPATER CLEANING AND WICK INSPECTION EVERY
THREE MONTHS.**

- I. Expose the rear of the case. Facing the rear of the case toward the right half, the wicking area will be covered by either full length panel with handles (Figure 1) or a removeable grate with thumb screws (Figure 2).



Figure 1 – Removing chimney back panel.

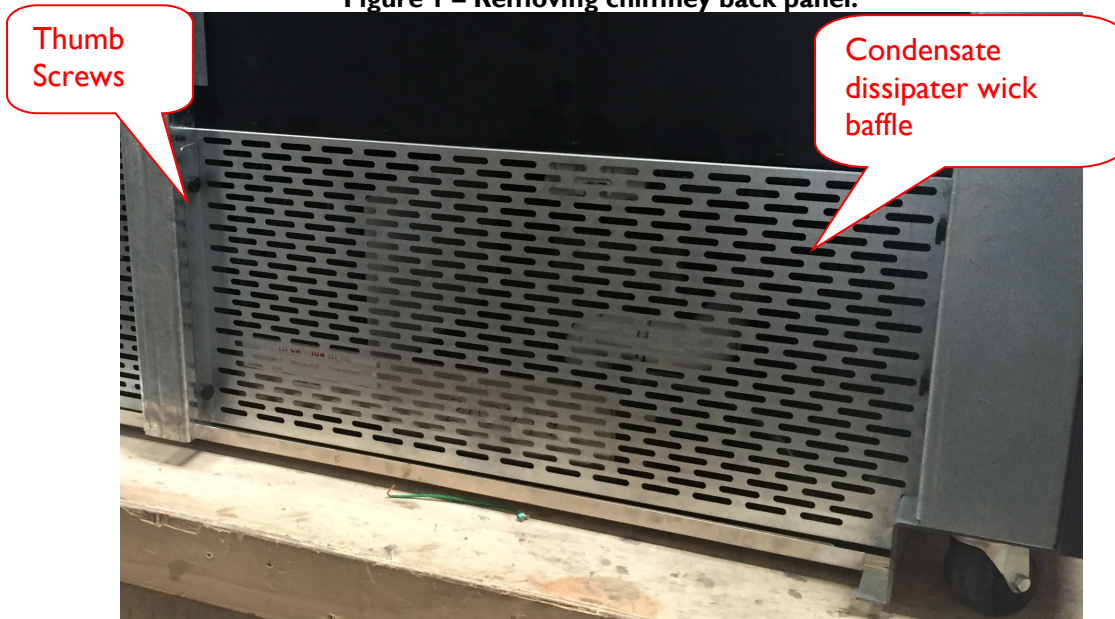


Figure 2 - Removed back panel showing wick access panel and attachment thumb screws.

- Remove the four thumb screws holding on the baffle. Pull off the baffle to expose the condensate wick and pan.

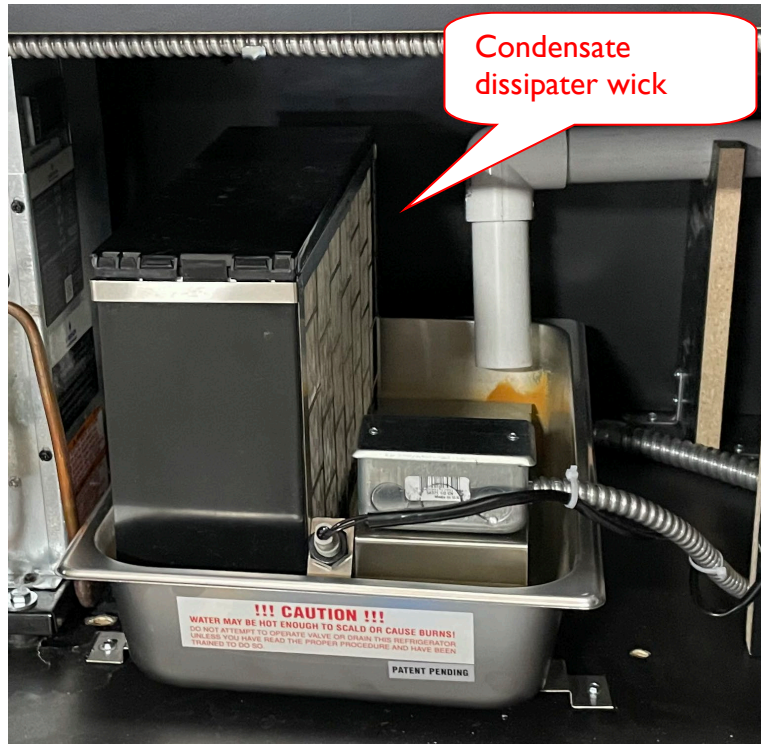


Figure 3 – Condensate wick and pan.

- With a firm grip on the wick, tilt the wick to the right as shown. Lift the bottom of the wick out of the pan and pull the wick out from the case.

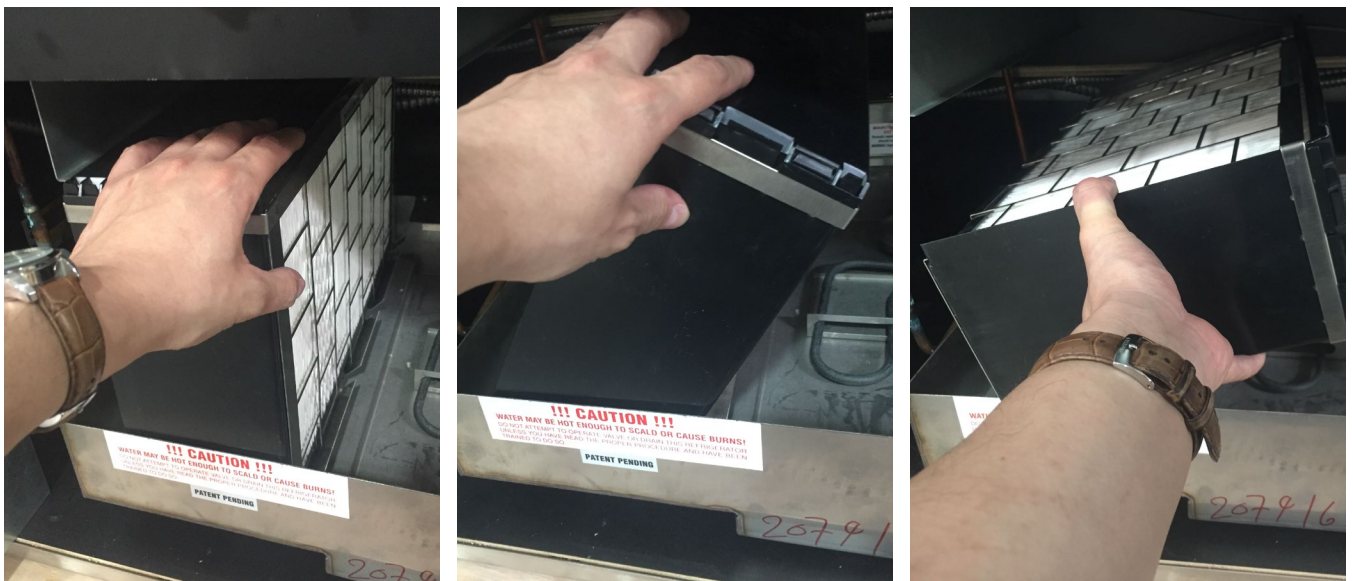


Figure 4 - Tilt wick to the right and lift from the case.

4. Remove the wick from the protective cage. DO NOT DISCARD THIS CAGE.
5. Take your new wick, place it upside down on the floor and place the wick cage over the new wick. Slide it down until the wick is fully seated into its cage.



Figure 5 – Seating the new wick into the cage.

6. Reverse steps one thru three to insert the new wick into the unit. Note the orientation of the wicking element. The top of the wicking element is marked “top” and the arrows marked “back” should be pointing toward the condensing unit to the left.



Figure 6 - Wick orientation. Arrows denote the side that should be facing the condensing unit.